



C-Series MOUVEX TECHNOLOGY

Eccentric Disc Pumps

No Mechanical Seals

Seal free means leak free. Designed without mechanical seals, packing or magnets, the C-Series eliminates leakage and reduces maintenance time.

No Expensive Magnets

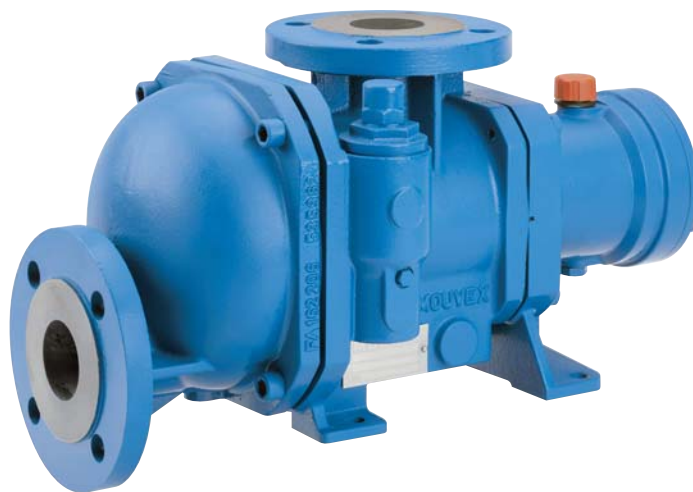
The C-Series pumps are direct coupled to the gear reduction unit or motor. No magnets are required.

Clean-In-Place Capability

The C-Series is designed to be flushed and cleaned in place without disassembly.

Ideal for Sanitary Applications

The stainless steel models are ideal for sanitary applications, carry 3A approval certification and are designed per EHEDG (European Hygienic Equipment Design Group) recommendations.





C-Series MOUVEX TECHNOLOGY Eccentric Disc Pumps

Gentle and Efficient

Shear sensitive materials are safe when pumped with the C-Series. The unique eccentric disc concept provides gentle handling and high-volume efficiency.

Performance When It Counts

Capable of handling 3,000 Cst (14,000 SSU) liquids and working pressures of 5-9 Bar (72.5-130 psi), depending on the model, the C-Series will clear intake and discharge lines of residual material. Rated to 80°C (176°F) the C-Series provides extraordinary self-priming and limited dry-run capability as added benefits.

Application Versatility

The innovative C-Series pumps are designed to meet a wide variety of industrial applications:



Chemicals
Fine Chemicals



Pharmaceuticals
Cosmetics



Agrochemicals



Papermaking



Petrochemicals

Construction



Stainless Steel

Bellows: 316 Stainless Steel

Rings: FKM
Encapsulated PTFE
FDA FKM

Flanges: SMS

ANSI Compatible
DIN
Clamp
Cherry Burrel

Optional Heating Jacket



Ductile Iron

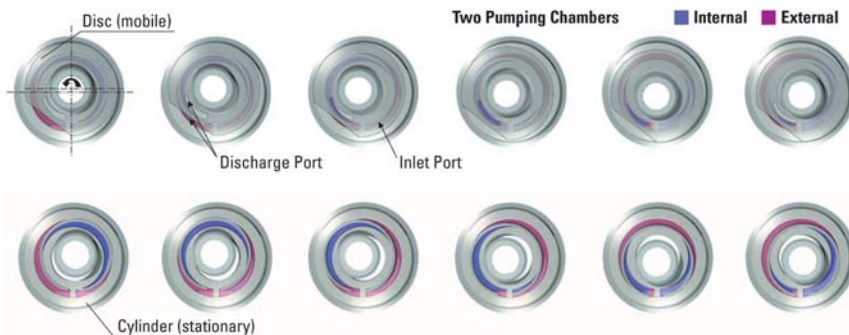
Bellows: 316 Stainless Steel

Rings: FKM
Flanges: ANSI Compatible
Optional Heating Jacket

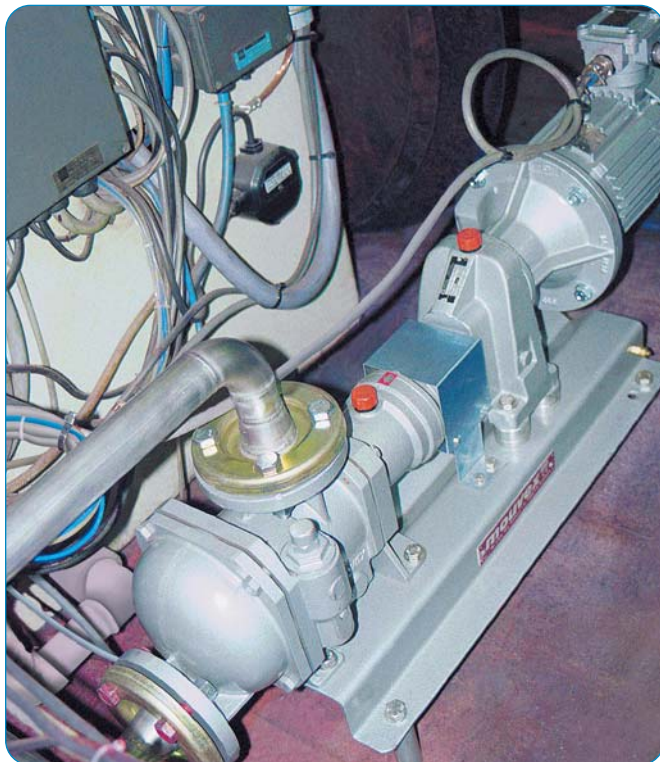
The Mouvex Technology Eccentric Disc



Clear plexiglass body for illustration only



Installation



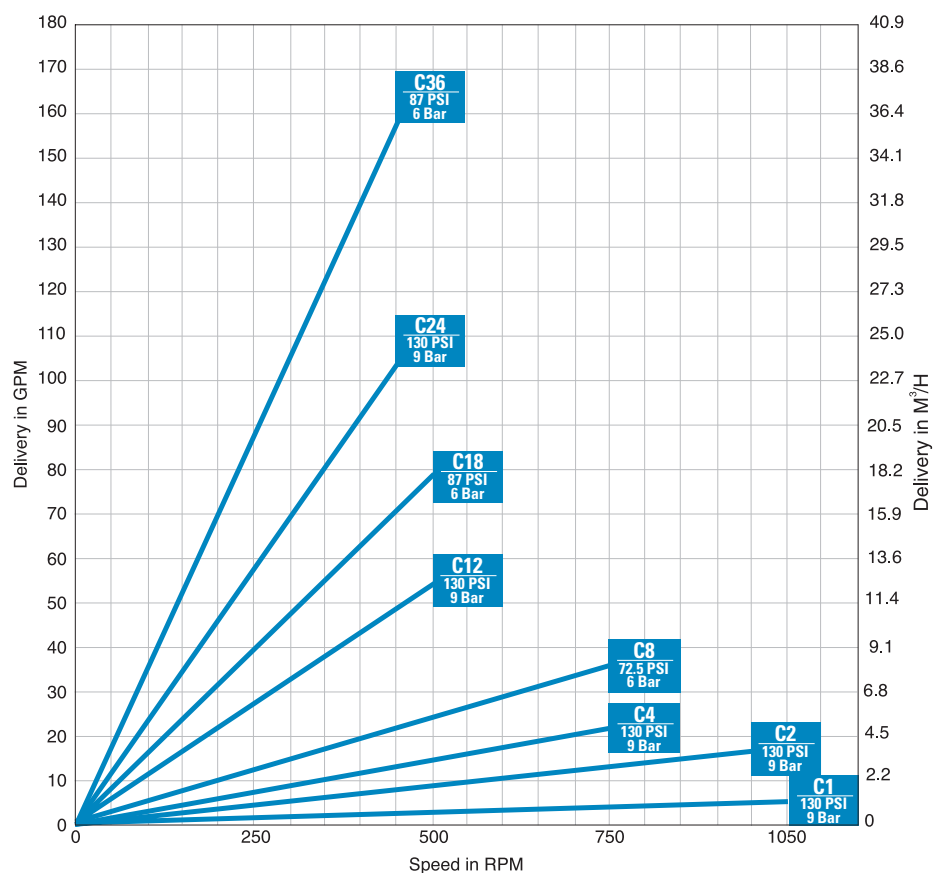
Ductile Iron C-Series Pump



Stainless Steel C-Series Pump

Performance Data

10 Cst (45 SSU) Viscosity Characteristics At Pressures Shown





C-Series MOUVEX TECHNOLOGY Eccentric Disc Pumps

Stainless Steel Model

	C1I		C2I		C4I		C8I		C12I		C18I		C24I		C36I	
	in.	mm	in.	mm	in.	mm	in.	mm	in.	mm	in.	mm	in.	mm	in.	mm
A	-	19	-	19	-	20	-	20	-	35	-	35	-	38	-	38
B	-	6	-	6	-	6	-	6	-	10	-	10	-	10	-	10
C	6.57	167	6.57	167	9.15	232.5	9.15	232.5	12.99	330	12.99	330	13.60	345.5	13.60	345.5
D	8.44	214.5	8.70	221	10.51	267	11.18	284	17.24	438	18.03	458	21.00	533.5	22.05	560
DF*	9.04	229.5	9.29	236	-	-	-	-	-	-	-	-	-	-	-	-
E	2.09	53	2.09	53	2.44	62	2.44	62	3.80	96.4	3.80	96.4	4.76	121	4.76	121
F	7.72	196	7.72	196	8.98	228	8.98	228	13.27	337	13.27	337	15.55	395	15.55	395
G	4.13	105	4.13	105	4.72	120	4.72	120	6.89	175	6.89	175	8.82	224	8.82	224
H	3.54	90	3.54	90	4.29	109	4.29	109	6.16	156.5	6.16	156.5	7.36	187	7.36	187
HF*	4.13	105	4.13	105	-	-	-	-	-	-	-	-	-	-	-	-
J	-	-	-	-	-	-	-	-	3.98	101	3.98	101	5.06	128.5	5.06	128.5
K	3.76	95.5	3.76	95.5	5.91	150	5.91	150	10.16	258	10.16	258	9.35	237.5	9.35	237.5
L	5.18	131.5	5.18	131.5	6.77	172	6.77	172	9.37	238	9.37	238	12.81	325.5	12.81	325.5
M	3.39	86	3.39	86	5.98	152	5.98	152	8.66	220	8.66	220	8.27	210	8.27	210
N	-	4	-	4	-	4	-	4	-	6	-	6	-	6	-	6
P	0.39	10	0.39	10	0.55	14	0.55	14	0.71	18	0.71	18	0.71	18	0.71	18
Q	-	-	-	-	-	-	-	-	-	-	-	-	11.02	280	11.02	280

* DF and HF are dimensions with flanges.
NOTE: Do not use dimensions for fabrication!

Stainless Steel Models Weight

C1I		C2I		C4I		C8I		C12I		C18I		C24I		C36I	
LB	KG	LB	KG	LB	KG	LB	KG	LB	KG	LB	KG	LB	KG	LB	KG
51	23	51	23	88	40	95	43	255	116	268	122	411	187	444	202

Ductile Iron Models

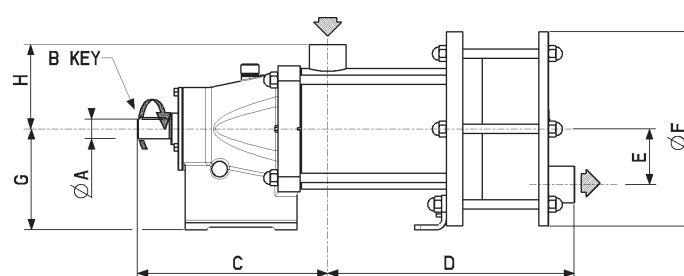
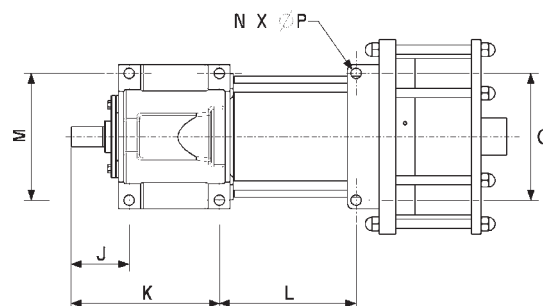
	C4A		C8A		C12A		C18A	
	in.	mm	in.	mm	in.	mm	in.	mm
A	-	20	-	20	-	35	-	35
B	-	6	-	6	-	10	-	10
C	10.04	255	10.04	255	14.21	361	14.21	361
D	9.53	242	10.20	259	15.12	384	15.12	384
E	2.64	67	2.64	67	4.29	109	4.29	109
F	9.13	232	9.13	232	14.29	363	14.29	363
G	4.72	120	4.72	120	6.89	175	6.89	175
H	5.00	127	5.00	127	6.77	172	6.77	172
J	-	-	-	-	3.98	101	3.98	101
K	5.91	150	5.91	150	10.16	258	10.16	258
L	6.77	172	6.77	172	9.41	239	9.41	239
M	5.98	152	5.98	152	8.66	220	8.66	220
N	-	4	-	4	-	6	-	6
P	0.55	14	0.55	14	0.71	18	0.71	18

NOTE: Do not use dimensions for fabrication!

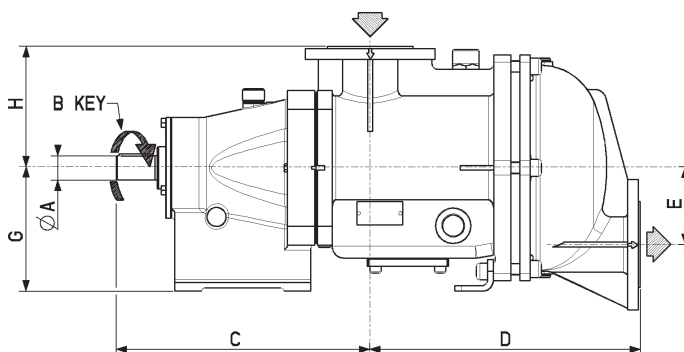
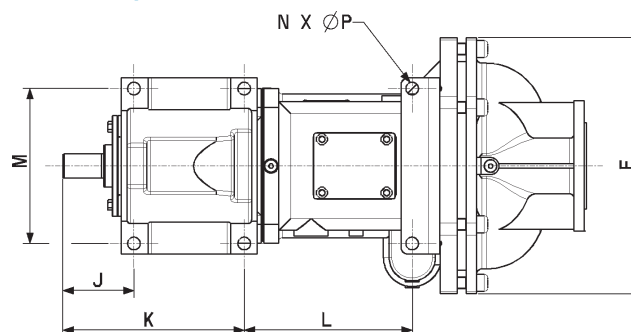
Ductile Iron Models Weight

C4A		C8A		C12A		C18A	
LB	KG	LB	KG	LB	KG	LB	KG
95	43	101	46	253	115	264	120

Stainless Steel Pump Dimensions



Ductile Iron Pump Dimensions



Distributed by:

World Headquarters

1809 Century Avenue SW
Grand Rapids, MI 49503-1530 USA
T 616.241.1611 F 616.241.3752

European Headquarters

ZI la Plaine des Isles, rue des Caillottes
89000 Auxerre, FRANCE
T +33.3.86.49.86.30 F +33.3.86.46.42.10

Blackmer
A DOVER COMPANY
www.blackmer.com